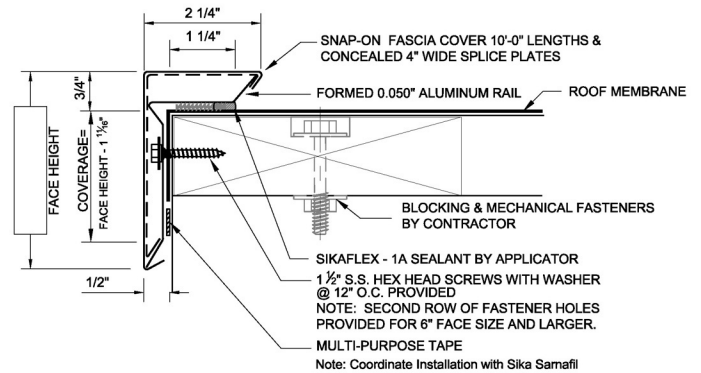


SIKA SARNAFIL PERIMETER EDGE METAL



Edge Grip Fascia

Edge Grip is a prefabricated edge attachment and fascia assembly used with Sika Sarnafil Roof Systems.

This classic product features a two-piece design with a snap-on fascia and a rigid termination rail to assure wind and water stay out of the roof membrane.

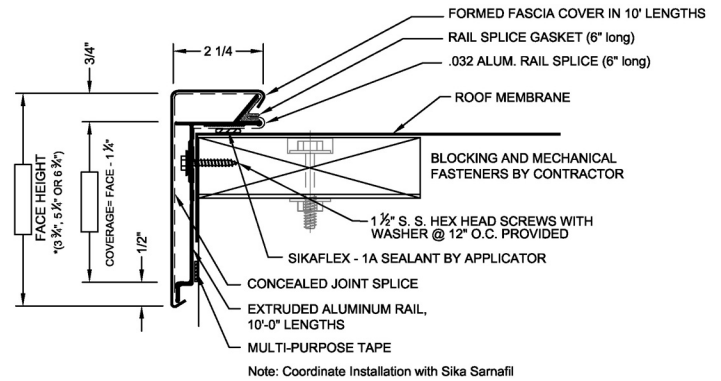
- Edge Grip Fascia clamps roof membrane like a termination bar.
- Allow the use of high-torque stainless steel screws (provided) without penetrating the top surface of the membrane.
- FM Approved and UL Classified to meet ANSI/SPRI ES-1 Wind Design Standard for Edge Systems.
- Standard fascia sizes are 3.75", 5.25" and 6.75". Custom sizes up to 13" are available.
- Standard fascia gauges are .040", .050" .063" aluminum and 24ga prefinished galvanized.
- Standard Edge Grip rail is fabricated from 20 gauge galvanized steel or optional .050" aluminum.
- Edge grip is available in a wide range of colors, finishes and face heights to match specific project requirements.
- A special Edge Grip assembly is available for ballasted roofs upon request.



Sika Sarnafil
A Division of Sika Corporation
100 Dan Rd.
Canton, MA 02021
Telephone: 800-451-2504 • Fax: 781-828-5365
Internet: www.sarnafilus.com



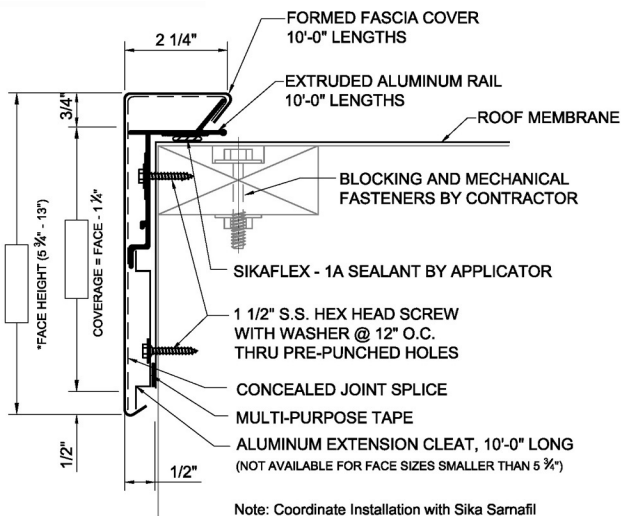
SIKA SARNAFIL PERIMETER EDGE METAL



Edge Grip Extruded Fascia

For those who prefer an extruded rail, you now have a choice with Edge Grip Extruded Fascia. Supplied with stainless steel screws for secure attachment without penetrating the top surface of the membrane.

- Clamps single ply roof membrane against building like a termination bar preventing leaks and blow-offs.
- Extruded rail in three sizes: 3.75" for one nailer, 5.25" for two nailers and 6.75" for three nailers of coverage.
- FM Approved and UL Classified to meet ANSI/SPRI ES-1.



- Extension cleat engages under the extruded rail drip allowing for custom face sizes.
- FM Approved and UL Classified to meet ANSI/SPRI ES-1.

Edge Grip Custom Extruded

Extruded aluminum rail is available to ship with your Sarnafil membrane for immediate installation. The fascia cover and rail extension will later finish off the job.

Corporate Office

Sika Sarnafil Inc. • 100 Dan Rd. • Canton, MA 02021
 Telephone: 800-451-2504 • Fax: 781-828-5365 • Internet: www.sarnafilus.com