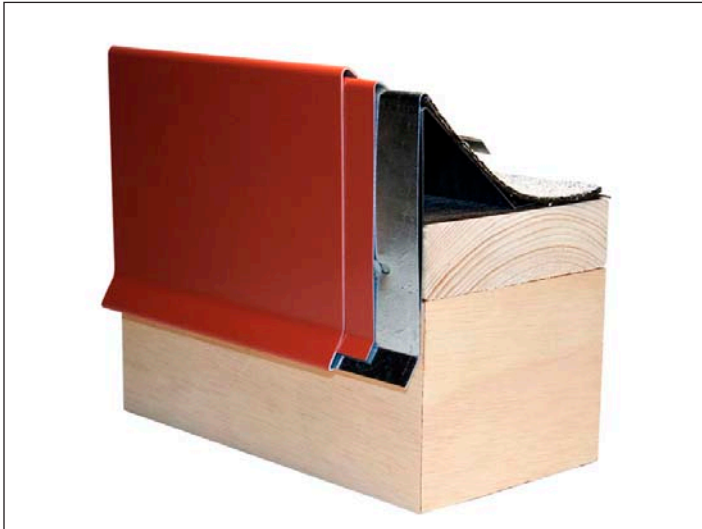


PERLOK® 90 FASCIA

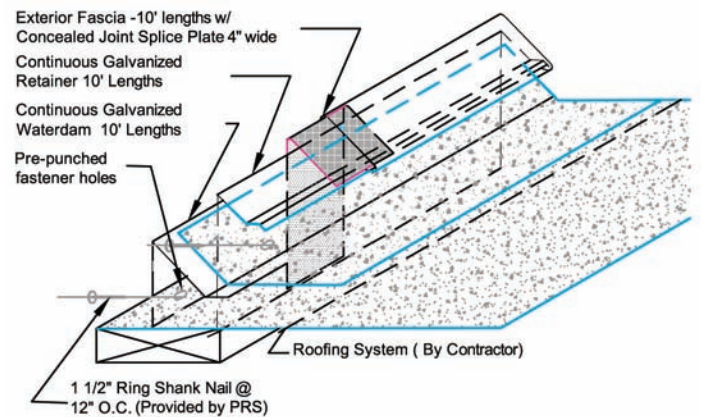
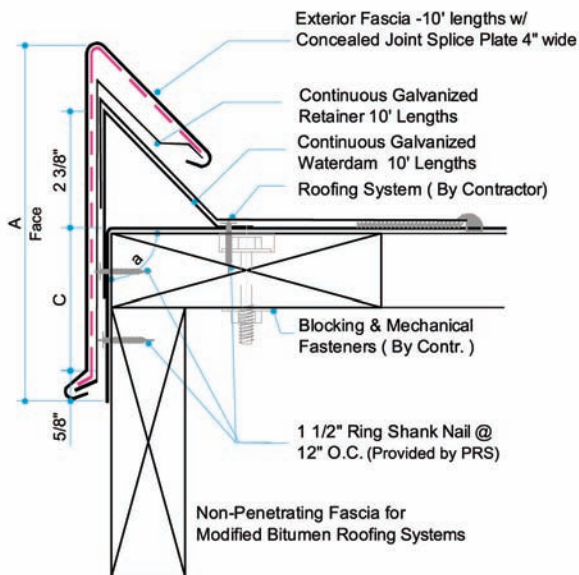


Locks roofing securely without the use of exposed fasteners.

Water dam can be installed first to “dry-in” the roof.

Factory Mutual Approved for windstorm rating up to FM 1-165.

Cover by our 20-Year Warranty for wind speeds up to 90 mph.



Perlok 90 Fascia and Gravelstop

PRODUCT NUMBER	FACE HEIGHT	FASCIA GAUGE	COVERAGE (MM)
PLF90-625	6.25" (159)	All sizes available in .050", .063" aluminum and prefinished 24 gauge galvanized steel	2.5" (64)
PLF90-775	7.75" (197)		4.0" (102)
PLF90-925	9.25" (235)		5.5" (140)
PLF90-1075	10.75" (273)		7.0" (178)

Custom Sizes Available by Request



DERBIGUM®
MAKING BUILDINGS SMART

PERFORMANCE Roof Systems, Inc.
4800 Blue Parkway
Kansas City, MO 64130
Phone - 800.727.9872 - Fax 816.924.1542
E-mail : info@derbigum.com - WWW.DERBIGUM.COM

Perlock 90 Gravel Stop System

SPECIFICATIONS *(short form)*

The gravel stop for Modified Bitumen roofing material shall be Perlok 90 Type (insert model number) as provided by the Performance Roof Systems. The fascia shall be formed metal fascia with continuous galvanized water dam. Fasteners are supplied by Performance Roof Systems. Fascia, water dam and retainer will be in 10' lengths.

DESCRIPTION

Perlok 90 is a three-part assembly designed for modified bitumen roofs. The system consists of a continuous galvanized steel water dam, exterior fascia and continuous galvanized steel retainer. Standard Perlok 90 is formed from .063" (1.60 mm) or .050" (1.25 mm) aluminum and 24 ga. Kynar 500® coated galvanized steel.

INSTALLATION PROCEDURES

Note: *This is a general outline only. Please refer to our full installation guide for additional specific detail.*

Preparation:

The roof edge must be level and wood nailers must be straight. Place corner supports at all corner locations and nail flange to deck. Locate and install leveling clips so they are at all corner locations and nail flange to deck. Locate and install leveling clips so they are at the end of each water dam section. Align angle clip with face flush to the roof edge face. Set water dam over corner support and leveling angle clip and secure. Using the furnished 1½" galvanized ring shank nails, attach the water dam to the nailer at 12" on center on the roof side and 12" on center on the face side. At the joints, lap the water dam ½". Do not fasten through the lap. Mop the felts or plies up and over the water dam, allowing the plies to overhang over the top of water dam by about 2". Trim overhanging felts flush with

the face of the water dam. Coordinate with Performance Roof Systems before starting installation. After the roofing ply has been adhered to the water dam, install the retainer. Starting at the corner locations and working towards the center, fasten the retainer through each pre-punched hole using the provided ring shank nails. Leave a ¼" gap between sections of retainer for thermal movement.

Locate the corners and concealed splice plates for the appropriate corner. Locate a splice plate at each end of the corner. Install the corner by pressing downward on the top flange until the corner engages the drip and the flange on the roof side. Locate a splice plate at one end of a straight length and install in the same manner. Insure that both the drip flange and back flange are fully engaged. Leave an 1/8" gap between fascia sections for thermal expansion. (1/4" when installing below 40 degree Fahrenheit or 4 degrees Celsius)

FINISHES

- Natural mill aluminum
- Pre-coat Kynar 500® — from the manufacturer's standard color chart
- Post-coat Kynar 500® — industry standard two coat colors
- Non-standard Kynar 500® — colors requiring multiple coatings or protective clear coats
- Anodized aluminum – clear, bronze and black

GUARANTEE

A. Manufacturer's Standard Warranty: Warranted materials shall be free of defects in material and workmanship for five years after shipment. If, after inspection, the manufacturer agrees that materials are defective, the manufacturer shall at their option repair or replace them. For decorative finish

warranty, consult manufacturer.

B. Special Performance/20-Year Warranty: Manufacturer shall guarantee that a standard size roof edge system, when installed per manufacturer's instructions, will not blow off, leak, or cause membrane failure, even in wind conditions up to 90 mph, or the manufacturer shall at their option repair or replace their materials.

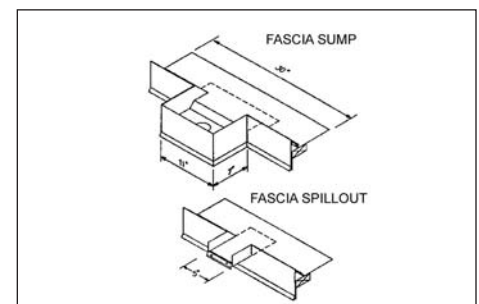
D. **Decorative Finish Warranty** *(consult manufacturer).*

QUALITY ASSURANCE

The fascia product shall be listed in the current Factory Mutual Research Corporation Approval Guide approved for up to FM 1-210. High performance roof edge to meet SPRI Test Method RE-2 Pull-Off test for fascia. Fascia shall be certified by the manufacturer to design pressures as indicated in current edition of Wind Resistance Standard for Edge Systems Used with Low Slope Roofing Systems.

TECHNICAL SERVICES

Engineering and shop drawings are available from the factory. Product samples, detail sheets, color chips and color charts are ready for your submittal package. For personal assistance with questions or submittals, contact your local representative or call Performance Roof Systems.



Performance Roof Systems

4800 Blue Parkway, Kansas City, MO 64130 • Phone (800) 727-9872 • Fax (816) 924-1542 • www.derbigum.com