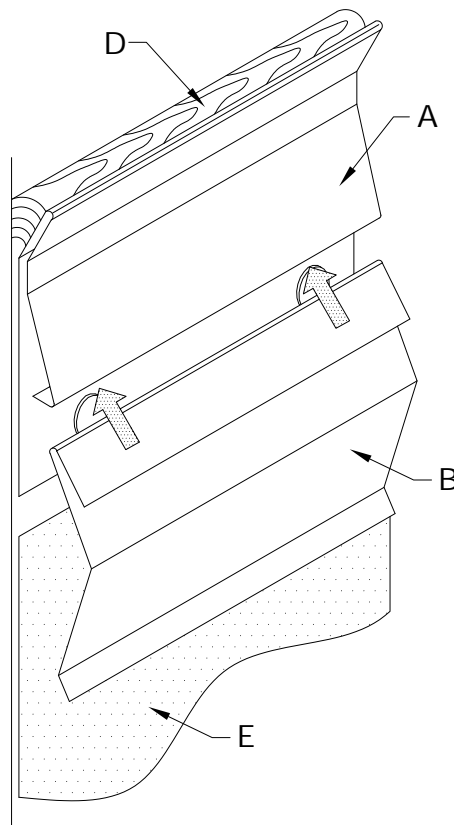
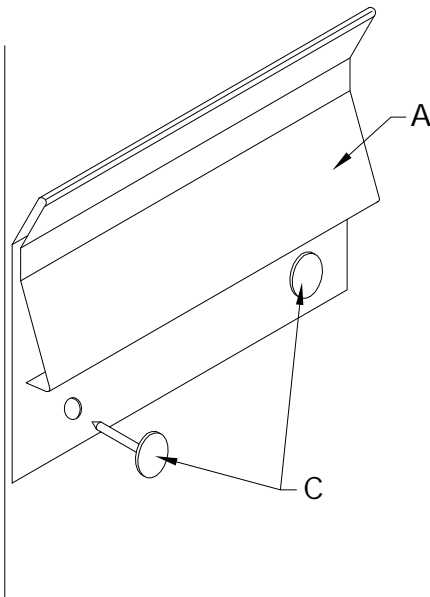
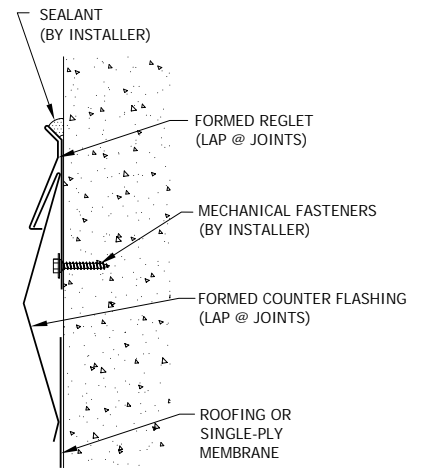


## Installation Guide for Concealed Mount Reglet

**NOTES:**

#1 - Isolate all metal parts from ACQ treated wood or other galvanically incompatible material with appropriate membrane material.  
#2 - Appliance attachments, such as lightning rods, signs, or antennae that penetrate the water seal, induce a galvanic reaction, or otherwise compromise the effectiveness of the roof edge system, shall be eliminated or isolated to prevent problems per section 8.0 of ANSI/SPRI ES-1. It is recommended that appliances be isolated from or not attached to the roof edge system. Consult the lightning protection system manufacturer for specific attachment instructions.



A. Formed Reglet  
10'-0" Lengths

B. Formed Counter Flashing  
10'-0" Lengths

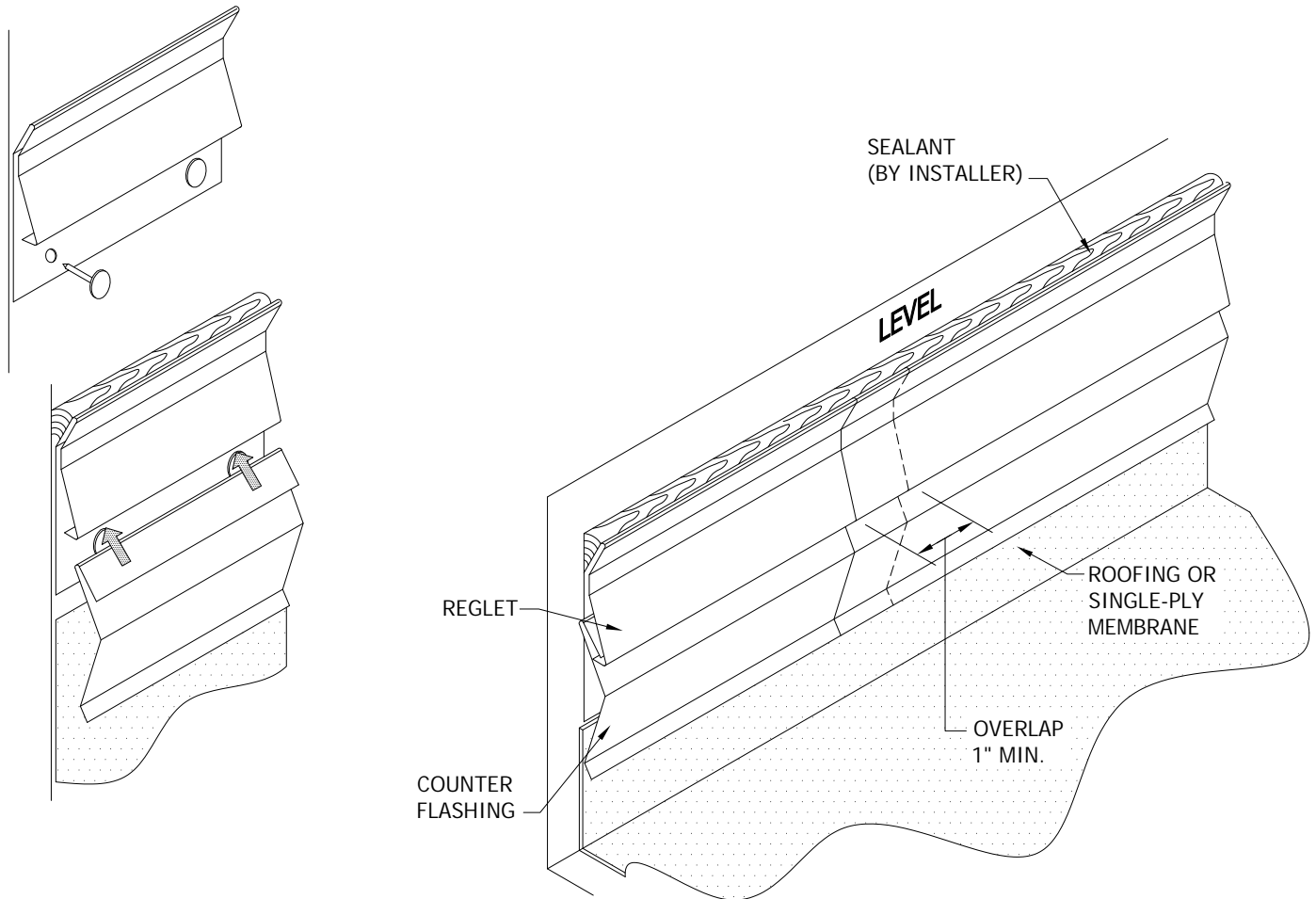
C. Mechanical Fasteners  
at 12" o.c. (6" from ends)  
(By Installer)

D. Sealant  
Continuous Bead of Sealant, 3/8" Wide  
(By Installer)

E. Roofing or Single-Ply Membrane  
(By Installer)

W.P. HICKMAN COMPANY

P.O. BOX 15005 - 9 Hickman Drive - Asheville, NC. 28803 - Phone: (828) 274-4000 - Fax: (828) 274-4031  
www.wph.com



**STEP 1: Installation of Reglet**

Ensure that roofing membrane is continued up the side wall a min. of 18". Set the reglet over membrane. Attach using mechanical fasteners (by installer). Locate fasteners in each pre-punched holes. Be sure to overlap adjoining piece of reglet a min. of 1" to allow for thermal expansion.

**STEP 2: Installation of Counter Flashing**

Locate 10'-0" straight lengths of counter flashing below the mounted reglet. Slide the counter flashing up into the reglet receiver until it is fully engaged. Be sure to overlap adjoining piece of counter flashing a min. of 1" to allow for thermal expansion.

**STEP 3: Installation of Sealant**

Apply a continuous (3/8") wide bead of sealant to the top side of the reglet (see diagram above).

**CORNER APPLICATION**

Field bevel cut reglet and counter flashing for appropriate corner.