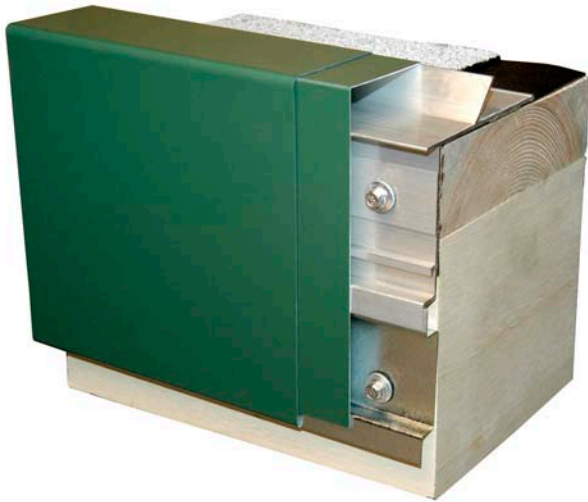


PERLOK® 150 FASCIA

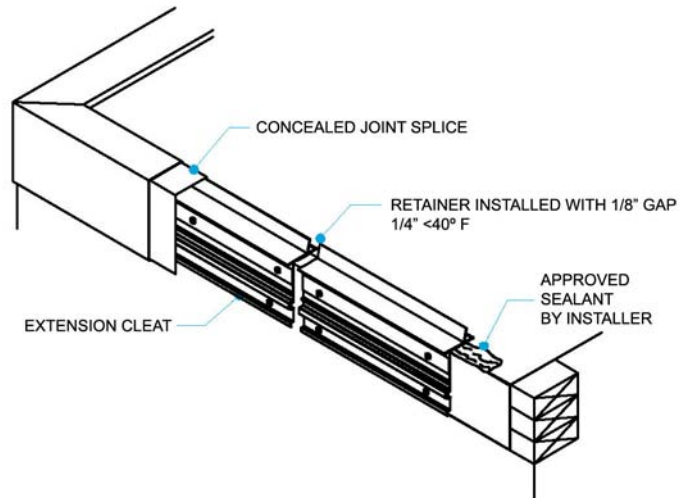
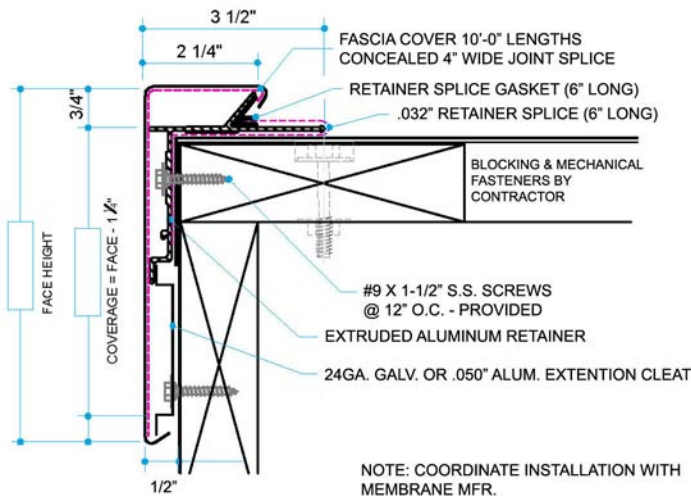


Clamps roof membrane against building like a termination bar preventing leaks and blow-offs

Extruded retainer base may be shipped immediately to dry in the roof without knowing the face height or color

Extension cleat engages under the extruded retainer drip allowing for custom face sizes

Factory Mutual Approved for up to FM 1-315 and covered by our 20-Year, 150 mph warranty.



Product Number	Fascia Height "A"	Coverage "C"	Number of Nailers Covered
PEX-375	3.75" (95mm)	2.50" (64mm)	1
PEX-575	5.75" (147mm)	4.50" (114mm)	2
PEX-675	6.75" (171mm)	5.50" (140mm)	3
PEX-825	8.25" (210mm)	7.00" (178mm)	4
PEX-975	9.75" (248mm)	8.50" (216mm)	5
PEX-1125	11.25" (286mm)	10.00" (254mm)	6
PEX-1275	12.75" (324mm)	11.50" (292mm)	7

Custom Sizes 5.25" - 13" By Request



DERBIGUM®
MAKING BUILDINGS SMART

PERFORMANCE Roof Systems, Inc.
4800 Blue Parkway
Kansas City, MO 64130
Phone - 800.727.9872 - Fax 816.924.1542
E-mail : info@derbigum.com - WWW.DERBIGUM.COM

SPECIFICATIONS

(short form)

Perlok® 150 is a low profile roof edge for modified bitumen roofing. The fascia shall be formed metal with an extruded retainer base. A 24 ga. galvanized steel or .050" aluminum extension cleat is used for face sizes above 3.75". The roof edge shall be Perlok® 150 for Mod Bit type (*insert model number*). Fascia and retainer base plate will be in 10'-0" (3048 mm) lengths.

DESCRIPTION

Perlok® 150 is a three-part assembly with an extruded retainer base, extension cleat and a decorative snap-on fascia cover for modified bitumen roofing. The fascia will be formed aluminum, .032" (0.80 mm), .040" (1.00 mm), .050" (1.25 mm) or .063" (1.60mm) or 24 ga. Kynar 500® coated galvanized steel with concealed splice plates. Extruded base will be .070" extruded aluminum with pre-punched .187" x .375" slotted holes for fasteners at 12" (304.8mm) on center in 10'-0" (3048 mm) standard lengths.

INSTALLATION PROCEDURES

NOTE: *This is a general outline only.*

Please refer to our full installation guide for additional specific detail.

Preparation:

The roof edge must be level and wood nailers must be straight. Install the roofing membrane according to Performance Roof Systems, Inc. instructions. The edge of the membrane should enveloped or terminated as required by Performance Roof Systems instructions. Before the extruded retainer is installed, apply a continuous bead of water cut-off sealant to the bottom side of the retainer. Install a retainer splice with rubber gasket onto the extruded retainer and leave at an 1/8" gap (1/4" in cold weather) at each joint between retainer sections. Secure the retainer using corrosion resistant screw fasteners. Locate the fasteners in the pre-punched holes as required. Unless otherwise specified, fasteners should be located every 12"

(304.8 mm). For custom face height larger than 5.75" install a galvanized extension cleat under the drip edge of the TEX-375 base. Install screws into each of the pre-punched holes. Install concealed splice plates between each fascia section. Hook the joint splice from the top and allow it to hang down the face of the retainer. Install fascia by hooking the back flange over the top of the retainer. Snap the fascia on by pushing down firmly on the leading edge until bottom snaps over the drip edge of the retainer. Leave a 1/8" gap at each joint (1/4" in cold weather) for thermal movement. Coordinate with membrane manufacturer before starting installation.

FINISHES

- Natural mill aluminum
- Pre-coat Kynar 500® — from the manufacturer's standard color chart
- Post-coat Kynar 500® — industry standard two coat colors
- Non-standard Kynar 500® — colors requiring multiple coatings or protective clear coats
- Anodized aluminum – clear, bronze and black

GUARANTEE

A. Manufacturer's Standard Warranty: Warranted materials shall be free of defects in material and workmanship for five years after shipment. If, after inspection, the manufacturer agrees that materials are defective, the manufacturer shall at their option repair or replace them. For decorative finish warranty, consult manufacturer.

B. Special 20-Year Warranty: Manufacturer shall guarantee that a standard size roof edge system, when installed per manufacturer's instructions, will not blow off, leak, or cause membrane failure, even in wind conditions up to 150 mph, or the manufacturer shall replace or repair its materials.

D. Decorative Finish Warranty (*consult*

manufacturer).

QUALITY ASSURANCE

The fascia product shall be listed in the current Factory Mutual Research Corporation Approval Guide approved for FM 1-315. Tested per ANSI/SPRI Test Method RE-2 Pull-Off test for fascia. Fascia shall be certified by the manufacturer to design pressures as indicated in current edition of Wind Resistance Standard for Edge Systems Used with Low Slope Roofing Systems. Meets International Building Code.

TECHNICAL SERVICES

Engineering and shop drawings are available from the factory. Product samples, detail sheets, color chips and color charts are ready for your submittal package. For personal assistance with questions or submittals, contact your local representative or call Performance Roof Systems.

Performance Roof Systems

4800 Blue Parkway, Kansas City, MO 64130 • Phone (800) 727-9872 • Fax (816) 924-1542 • www.derbigum.com