

Soprema Perimeter Edge Systems

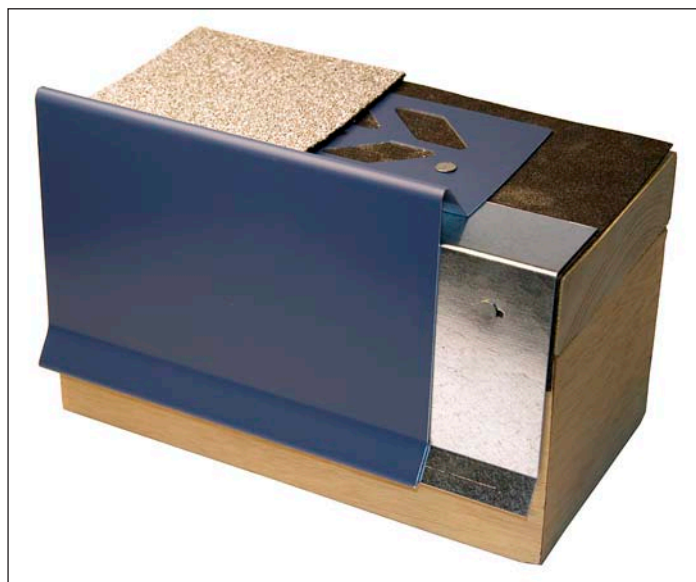


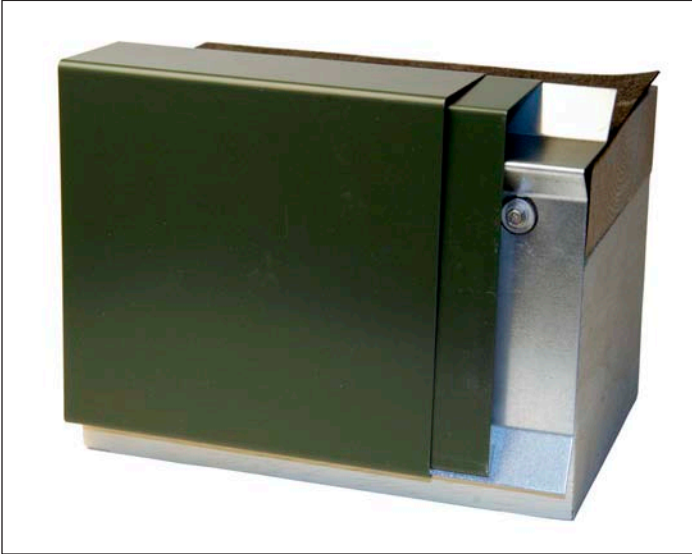
SopraGuard Gravel Stop System

SopraGuard is multi-component gravel stop system designed to firmly grip the Soprema membrane at the perimeter edge. The 3-part system consists of a continuous galvanized water dam, exterior fascia and a continuous aluminum compression clamp with fasteners that locks the assembly together. The water dam and compression clamp provide contact points which secure the fascia while allowing it to move and thermal cycle without breaking the seal between the metal and roofing.

SopraBond Roof Edge Detail

SopraBond uses a continuous pattern of offset holes in the roof flange through which the two plies of Soprema membrane can be bonded to each other. In effect, the roofing and metal become one, allowing the roof edge to expand and contract freely between the two layers of membrane without causing stress or fatigue.



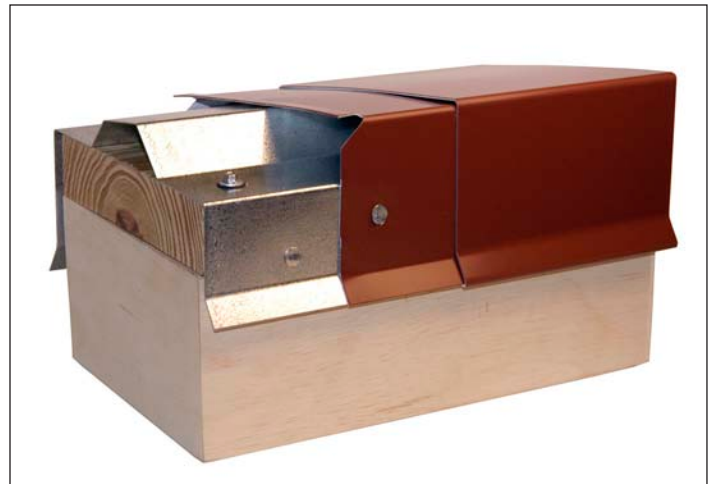


SopraEdge Roof Edge Detail

SopraEdge clamps the Soprema membrane against the perimeter like a termination bar. Simple two piece design consists of a continuous 20 gauge galvanized retainer and an aluminum or prefinished galvanized exterior fascia. Concealed joint cover provides a smooth, unbroken appearance.

SopraCap Parapet Coping Detail

SopraCap is a snap-on coping design with no exposed fasteners. The 20 gauge hold-down cleat has prepunched fastener holes for a quick installation. The coping is custom fabricated to meet job conditions.



**For technical support and pricing on Soprema edge metal contact W.P. Hickman:
Phone: (800) 892-9173 • Fax: (828) 274-4031**

*Regional Offices: West (800) 523-5414 Fax (714) 899-1036 / South East (800) 543-3085 Fax (770) 966-9165
East (800) 847-4705 Fax (330) 334-8326 / Midwest (800) 733-0641 Fax (330) 334-6257*